



**SBI**<sup>®</sup>

**PERFORMANCE**

VALVETRAIN COMPONENTS



# S.B. International, Inc.

2108 Utopia Avenue  
Nashville, TN 37211  
1-800-THE-SEAT (843-7328)  
www.sbintl.com



## TABLE OF CONTENTS

Domestic Performance Valves Description .....	Page 3
Chevrolet® Small Block/ Big Block Performance Valves .....	Page 4
Chevrolet® LS Performance Valves .....	Page 5
Domestic Performance Bronze Valve Guides .....	Page 6
Domestic Performance Valve Stem Seals .....	Page 7
Domestic Performance Valve Springs .....	Page 8
Domestic Performance Valves Spring Retainers .....	Page 9
Domestic Performance Lifters .....	Page 9
LS Rocker Arms .....	Page 10
Diesel Performance Valves Description .....	Page 11
Diesel Performance Valves .....	Page 12
Diesel Performance Valve Springs .....	Page 13
Inches and Millimeters Conversion Chart .....	Page 14
Metric to Decimal .....	Page 15



# DOMESTIC PERFORMANCE VALVES



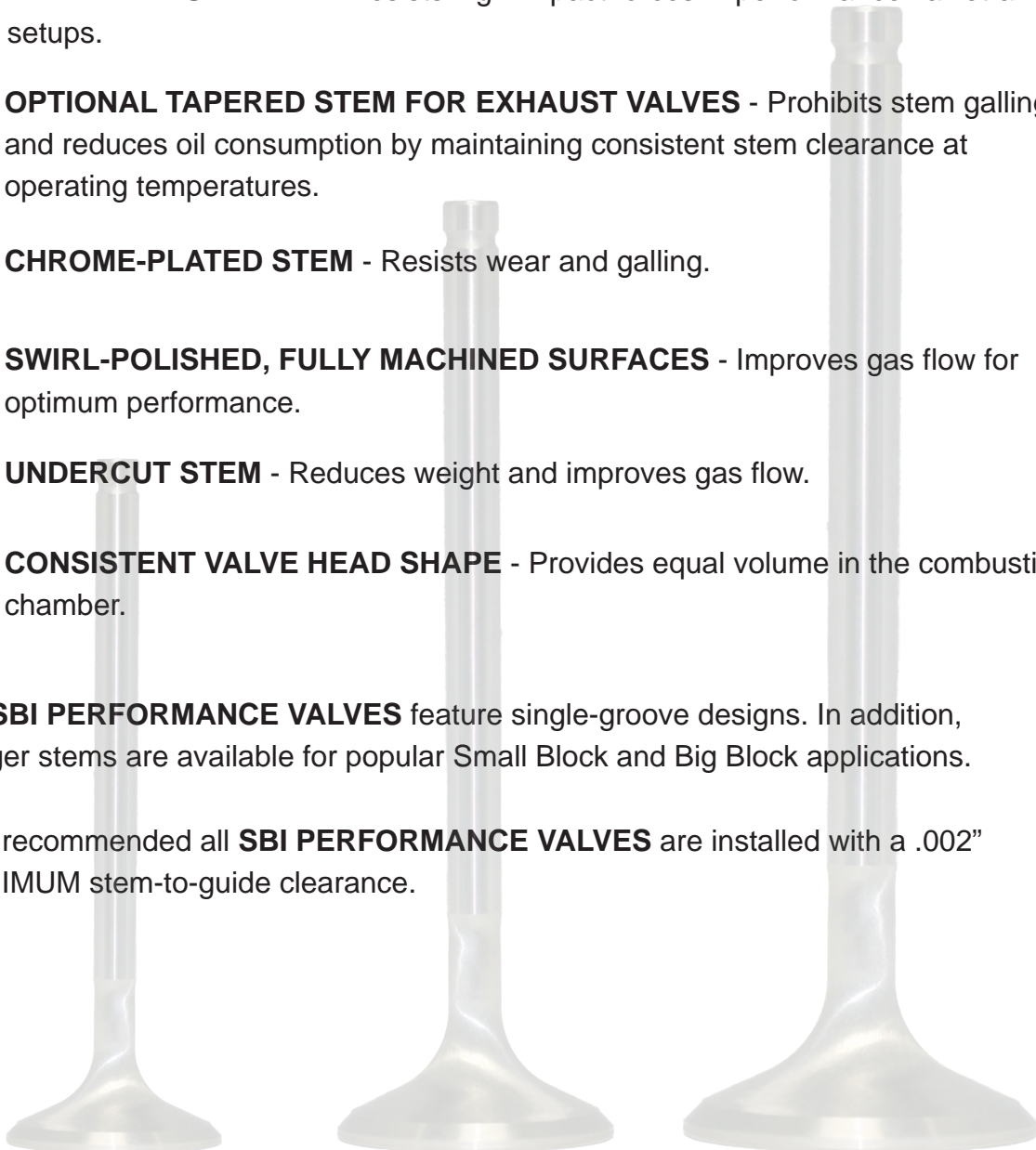
**SBI PERFORMANCE VALVES** have been specifically designed and constructed with special features to improve their operational performance over regular stock valves.

These special features and their respective benefits are:

- ▶ **ONE-PIECE 21-4N STAINLESS STEEL CONSTRUCTION** - Provides strength and corrosion resistance during high-temperature operations.
- ▶ **HARDENED STEM TIP** - Resists high-impact forces in performance valvetrain setups.
- ▶ **OPTIONAL TAPERED STEM FOR EXHAUST VALVES** - Prohibits stem galling and reduces oil consumption by maintaining consistent stem clearance at operating temperatures.
- ▶ **CHROME-PLATED STEM** - Resists wear and galling.
- ▶ **SWIRL-POLISHED, FULLY MACHINED SURFACES** - Improves gas flow for optimum performance.
- ▶ **UNDERCUT STEM** - Reduces weight and improves gas flow.
- ▶ **CONSISTENT VALVE HEAD SHAPE** - Provides equal volume in the combustion chamber.

All **SBI PERFORMANCE VALVES** feature single-groove designs. In addition, longer stems are available for popular Small Block and Big Block applications.

It is recommended all **SBI PERFORMANCE VALVES** are installed with a .002" MINIMUM stem-to-guide clearance.



# CHEVROLET® SMALL BLOCK / BIG BLOCK PERFORMANCE VALVES



SBI #	Engine	Type	Head Diameter	Stem Diameter	O/A Length	Installed Height	Tip Length
01769R	Small Block	E	1.500	0.3405 / 0.3415	4.905	Stock	0.289
02016R	Small Block	E	1.500	0.3415	4.925	Stock	0.250
01770R	Small Block	E	1.600	0.3405 / 0.3415	4.905	Stock	0.289
01771R	Small Block	E	1.600	0.3405 / 0.3415	5.005	.100 Long	0.289
01952R	Small Block	E	1.600	0.3415	4.925	Stock	0.250
01954R	Small Block	E	1.600	0.3415	5.025	.100 Long	0.250
02024R	Small Block	E	1.600	0.3415	5.125	.200 Long	0.250
01772R	Small Block	E	1.625	0.3405 / 0.3415	4.905	Stock	0.289
01762R	Small Block	I	1.940	0.3415	4.898	Stock	0.260
02026R	Small Block	I	1.940	0.3415	5.025	.100 Long	0.250
01763R	Small Block	I	2.020	0.3415	4.898	Stock	0.260
01764R	Small Block	I	2.020	0.3415	4.998	.100 Long	0.260
01765R	Small Block	I	2.055	0.3415	4.898	Stock	0.260
01766R	Small Block	I	2.055	0.3415	4.998	.100 Long	0.260
01767R	Small Block	I	2.080	0.3415	4.898	Stock	0.260
01768R	Small Block	I	2.080	0.3415	4.998	.100 Long	0.260
02029R	Small Block	I	2.080	0.3415	5.125	.200 Long	0.250
01776R	Big Block	E	1.725	0.3705 / 0.3715	5.347	Stock	0.220
02062R	Big Block	E	1.880	0.3405 / 0.3415	5.347	Stock	0.220
02061R	Big Block	E	1.880	0.3405 / 0.3415	5.447	.100 Long	0.220
01777R	Big Block	E	1.880	0.3705 / 0.3715	5.347	Stock	0.220
02043R	Big Block	E	1.880	0.3415	5.420	Race	0.250
01962R	Big Block	E	1.880	0.3415	5.520	Race .100 Long	0.250
01960R	Big Block	E	1.880	0.3715	5.420	Race	0.250
01961R	Big Block	E	1.880	0.3715	5.520	Race .100 Long	0.250
02059R	Big Block	E	1.940	0.3405 / 0.3415	5.447	.100 Long	0.220
02021R	Big Block	I	2.065	0.3715	5.220	Stock	0.220
01773R	Big Block	I	2.190	0.3720	5.230	Stock	0.220
01964R	Big Block	I	2.190	0.3715	5.320	.100 Long	0.220
02064R	Big Block	I	2.250	0.3415	5.330	.100 Long	0.220
01774R	Big Block	I	2.250	0.3720	5.230	Stock	0.220
02063R	Big Block	I	2.300	0.3415	5.330	.100 Long	0.220
01775R	Big Block	I	2.300	0.3720	5.230	Stock	0.220

# CHEVROLET® LS PERFORMANCE VALVES



SBI #	Engine	Type	Head Diameter	Stem Diameter	O/A Length	Installed Height	Tip Length
01935R-155	Small Block LS	E	1.550	0.3135	4.915	Stock	0.160
01935R-157	Small Block LS	E	1.570	0.3135	4.915	Stock	0.160
01935R-160	Small Block LS	E	1.600	0.3135	4.915	Stock	0.160
02000R-200	Small Block LS	I	2.000	0.3135	4.870	Stock	0.160
02000R-202	Small Block LS	I	2.020	0.3135	4.870	Stock	0.160
02000R-205	Small Block LS	I	2.050	0.3135	4.870	Stock	0.160



# DOMESTIC PERFORMANCE BRONZE VALVE GUIDES



S.B. International, features bronze valve guides made from manganese bronze.

Our valve guides are precision-machined to the highest quality available. Every valve guide is designed to withstand the high operating temperatures of today's engines. They are ideal for intake and exhaust applications and are compatible with SBI stainless and special high strength-alloy valves.


SBI #	O.D.	I.D.	Length	Valve Seal Diameter	Type*
340-1019BR	0.4390	0.3110	2.500	0.439	1-PB
340-1030BR	0.4397	0.3120	1.875	0.439	1-PB
340-1038BR	0.5020	0.2744	2.234	0.512	40-PB
340-1039BR	0.5020	0.2744	2.600	0.512	40-PB
340-1040BR	0.5020	0.3091	2.234	0.500	40-PB
340-1041BR	0.5020	0.3091	2.600	0.500	40-PB
340-1042BR	0.5020	0.3413	2.234	0.530	40-PB
340-1043BR	0.5020	0.3413	2.600	0.530	40-PB
340-1044BR	0.5020	0.3430	2.500	0.500	40-PB
340-1045BR	0.5020	0.3430	3.065	0.500	40-PB
340-1046BR	0.5010	0.3150	2.120	0.500	1-PB
340-1033BR	0.5020	0.3421	2.750	0.500	1-PB
340-1032BR	0.5020	0.3421	3.063	0.500	1-PB
340-1029BR	0.5020	0.3430	2.500	0.500	1-PB
340-1021BR	0.5020	0.3431	2.375	0.500	1-PB
340-1022BR	0.5020	0.3431	2.625	0.500	1-PB
340-1026BR	0.5020	0.3431	2.875	0.500	1-PB
340-1034BR	0.5020	0.3432	2.125	0.500	1-PB
340-1020BR	0.5020	0.3440	2.250	0.500	1-PB
340-1035BR	0.5020	0.3705	3.065	0.500	1-PB
340-1024BR	0.5020	0.3721	2.375	0.500	1-PB
340-1025BR	0.5020	0.3724	2.750	0.500	1-PB
340-1028BR	0.5020	0.3734	2.375	0.500	1-PB
340-1027BR	0.5020	0.3734	2.625	0.500	1-PB
340-1031BR	0.5020	0.3741	2.500	0.500	1-PB
340-1037BR	0.6203	0.3735	2.555	0.530	40-PB
340-1036BR	0.6250	0.3735	2.415	0.530	40-PB

# DOMESTIC PERFORMANCE VALVE STEM SEALS




## ALL-TEFLON®

SBI #	Material	Valve Stem Diameter	Guide O.D.	Seal O.D.
322-1000	TEFLON	5/16	0.415	0.508
322-1001	TEFLON	5/16	0.500	0.600
322-1002	TEFLON	5/16	0.531	0.631
322-1003	TEFLON	11/32	0.500	0.600
322-1004	TEFLON	11/32	0.531	0.631
322-1006	TEFLON	3/8	0.500	0.600
322-1007	TEFLON	3/8	0.531	0.631




## METAL CLAD with VITON®

SBI #	Material	Valve Stem Diameter	Guide O.D.	Seal O.D.
322-1008	VITON	5/16	0.500	0.625
322-1009	VITON	5/16	0.531	0.680
322-1010	VITON	11/32	0.500	0.625
322-1011	VITON	11/32	0.531	0.680
322-1012	VITON	3/8	0.500	0.625
322-1013	VITON	3/8	0.531	0.680
322-1024	VITON	3/8	0.562	0.660




## ALL-METAL CLAD with VITON® (For use with triple springs without machining)

SBI #	Material	Valve Stem Diameter	Guide O.D.	Seal O.D.
322-1014	VITON	5/16	0.500	0.550
322-1015	VITON	5/16	0.531	0.580
322-1016	VITON	11/32	0.500	0.550
322-1017	VITON	11/32	0.531	0.580



## ALL-METAL CLAD with TEFLON®

SBI #	Material	Valve Stem Diameter	Guide O.D.	Seal O.D.
322-1020	TEFLON	11/32	0.500	0.630
322-1021	TEFLON	11/32	0.531	0.630
322-1022	TEFLON	3/8	0.531	0.630
322-1023	TEFLON	3/8	0.562	0.660





# DOMESTIC PERFORMANCE VALVE SPRINGS



SBI Performance springs are manufactured from the highest quality-grade wire. The high quality wire allows our springs to endure high loads produced by racing cams. Springs are heat-treated and stress relieved to increase spring longevity and provide the stability needed for high loads and high RPM.

SBI #	Spring Type	O.D.	I.D.	Pressure Loads (lbs.)	Solid Height	Make	Application	Use With Retainer
360-1010	Single with Damper	1.260	0.876	118 @ 1.700 318 @ 1.210	1.160	GM	Hyd. Chevy S.B.	361-1015- 1.700 Inst. Hgt.
360-1012	Single with Damper	1.260	0.876	110 @ 1.800 325 @ 1.200	1.160	GM	Mech. Chevy S.B.	361-1015- 1.700 Inst. Hgt.; 361-1013- 0.075 Tallger Hgt.
360-1013	Single with Damper	1.260	0.876	130 @ 1.800 350 @ 1.200	1.160	GM	Mech. Chevy S.B.	361-1013
360-1016	Dual	1.460	0.840	120 @ 1.875 395 @ 1.175	1.080	GM	Hyd./Mech. S.B.	361-1011

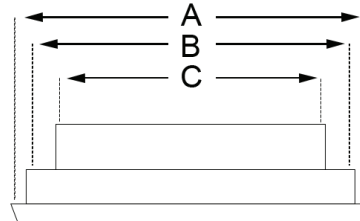




# DOMESTIC PERFORMANCE VALVES SPRING RETAINERS



SBI's valve spring retainers are manufactured from 4140 bar stock and heat-treated to HRC 38-42; in addition, they are coated with a black oxide finish for maximum corrosion protection.



SBI #	A	B	C	Valve Stem Diameter	Notes
361-1010	1.375	1.075	0.792	11/32	0.040 Taller Installed Height Than 361-1015
361-1013	1.125	0.855	0.640	11/32	0.075 Taller Installed Height Than 361-1015
361-1014	1.400	1.060	0.690	11/32	0.100 Taller Installed Height than 361-1015 (Note: Use with 10 Degree Locks)

## DOMESTIC PERFORMANCE LIFTERS

SBI lifters are backed with more than 20 years of experience, reliability, quality and innovation. Our performance lifters are manufactured to a tighter tolerance than OEM lifters, which reduces lift loss due to leak-down and allows full utilization of the cam event, equalling more power. Each lifter has a precise oil-metering system to eliminate excess oil to rocker arm at high RPMs.

All SBI performance lifters have a hardened steel snap ring design as added strength over standard wire clips.

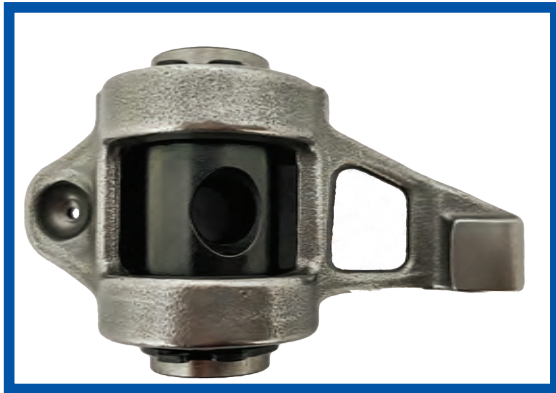
SBI #	Type	Flat Snap Ring	Application	Stock Version
VL63	Mechanical	Yes	GM - SB & BB	
VL66RH	Hydraulic	Yes	GM - SB	VL37
VL67RH	Hydraulic	Yes	Ford - SB & BB	VL35
VL117RH	Hydraulic	Yes	GM - SB & BB	VL73

# LS ROCKER ARMS



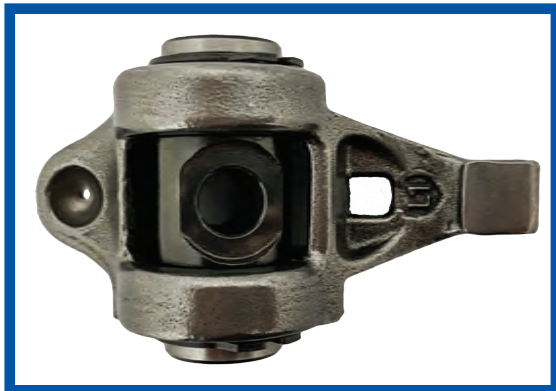
SBI's LS Rocker Arms are manufactured using a high grade case steel. Our design eliminates the factory bearing and powdered metal trunion and utilizes a captive bearing design and also a high-grade steel trunion. This design allows for a full range of motion and less chance of bearing failure and eliminates the need for costly trunion conversion kits.

These rocker arms are stock 1.7 ratio, which can be used in stock and performance applications.



## **180-1336**

Offset intake for LS3



## **180-1337**

Intake/Exhaust for LS1, LS2,  
LS6 & LS9

Exhaust only LS3

# DIESEL PERFORMANCE VALVES

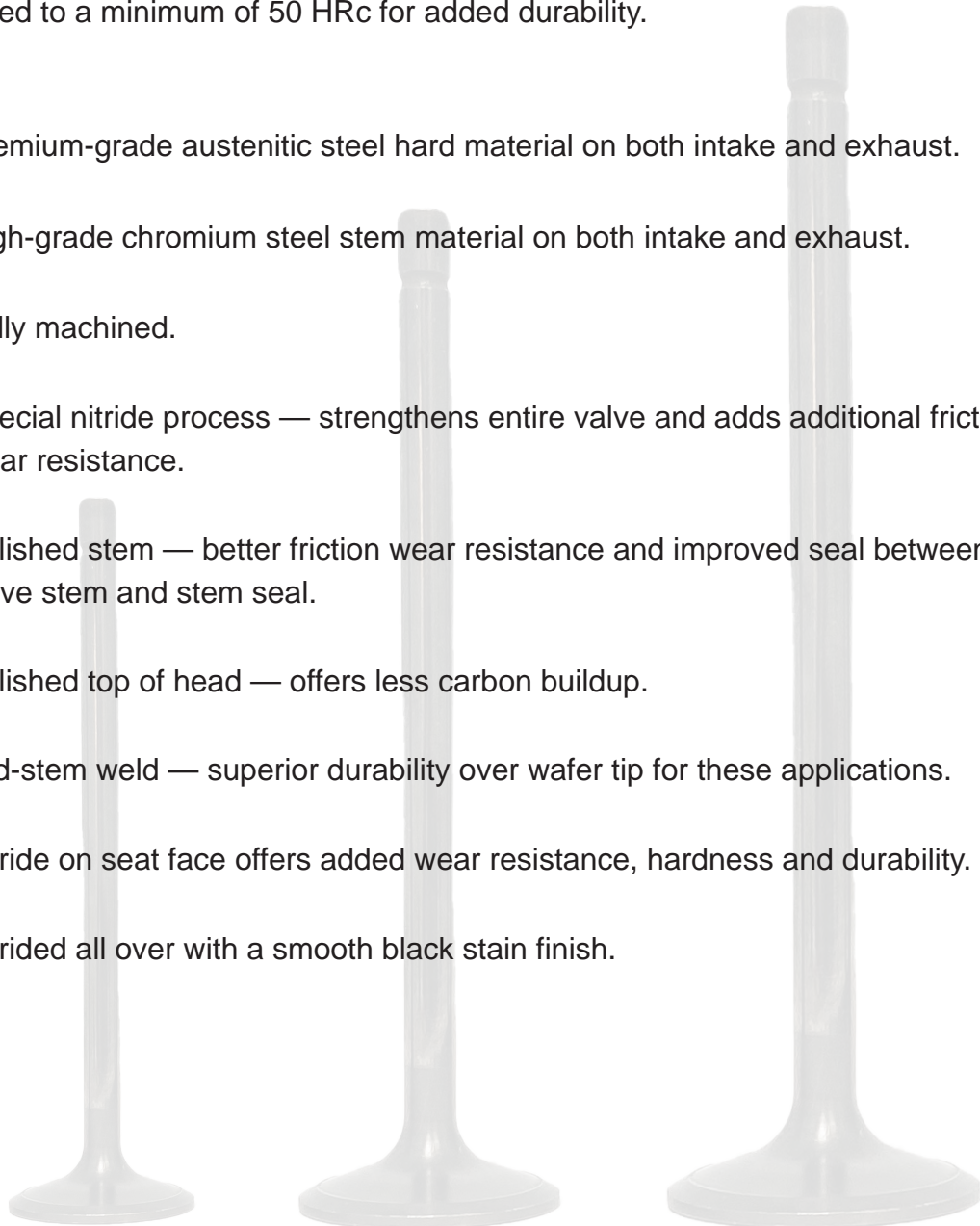


SBI's diesel performance valves are a bimetallic design utilizing special processes which improve their overall durability and performance over stock valves.

Each valve is constructed using a premium-grade austenitic stainless steel head material on both the intake (EV8) and exhaust (EV16) with mid-stem weld using a high-grade chromium steel stem material (HNV3).

Each valve is fully machined and nitrided all over, then polished. Each valve tip is hardened to a minimum of 50 HRc for added durability.

- ▶ Premium-grade austenitic steel hard material on both intake and exhaust.
- ▶ High-grade chromium steel stem material on both intake and exhaust.
- ▶ Fully machined.
- ▶ Special nitride process — strengthens entire valve and adds additional friction wear resistance.
- ▶ Polished stem — better friction wear resistance and improved seal between valve stem and stem seal.
- ▶ Polished top of head — offers less carbon buildup.
- ▶ Mid-stem weld — superior durability over wafer tip for these applications.
- ▶ Nitride on seat face offers added wear resistance, hardness and durability.
- ▶ Nitrided all over with a smooth black stain finish.



# DIESEL PERFORMANCE VALVES



Application	Years	Part Number	Type	Head Diameter	Head Diameter	O/A Length	Installed Height	Tip Length	Seat Angle
Dodge/Cummins 6BT 5.9L/12 Valve	1989-1998	01665R	I	1.772	0.3138	5.084	Stock	0.180*	30.0°
Dodge/Cummins 6BT 5.9L/12 Valve	1989-1998	01664R	E	1.654	0.3138	5.076	Stock	0.180*	45.0°
Dodge/Cummins ISB 5.9L/24 Valve	1998-2009	02014R	I	1.299	0.2756	4.907	Stock	0.240*	30.0°
Dodge/Cummins ISB 5.9L/24 Valve	1998-2009	13006R	E	1.299	0.2756	4.893	Stock	0.240*	45.0°
Ford Powerstroke 6.0L/32 Valve	2003-2010	02179R	I	1.339	0.2737	5.058	Stock	0.317*	30.0°
Ford Powerstroke 6.0L/32 Valve	2003-2010	02180R	E	1.102	0.2737	5.058	Stock	0.317*	37.5°
Ford Powerstroke 6.4L/32 Valve	2008-2010	13182R	I	1.339	0.2738	5.138	Stock	0.436*	37.0°
Ford Powerstroke 6.4L/32 Valve	2008-2010	13183r	E	1.162	0.2738	5.138	Stock	0.436*	39.5°
GM Duramax 6.6L/32 Valve	2001-2016	02175R	I	1.299	0.2739	4.975	Stock	0.481*	45.0°
GM Duramax 6.6L/32 Valve	2001-2016	02176R	E	1.220	0.2730	4.963	Stock	0.481*	45.0°
Ford Powerstroke 7.3L/16 Valve	1994-2003	01785R	I	1.680	0.3122	5.805	Stock	0.341*	30.0°
Ford Powerstroke 7.3L/16 Valve	1994-2003	01786R	E	1.680	0.3122	5.799	Stock	0.291*	37.0°

\*Tip length dimensions are measured from the tip to top of keeper groove.



# DIESEL PERFORMANCE VALVE SPRINGS



Benefit of Nitriding Process:

- a. Surface hardness increases, hence fatigue life of spring increases by 32%
- b. Creep resistance of spring increases by 45%

SBI Number	Spring Type	O.D.	I.D.	Pressure Loads (lbs.)	Solid Height	Make	Application
360-1020	Single	1.058	0.743	110 @ 1.360 159 @ 1.060	0.854	Cummins	5.9/6.7L 24
360-1021	Single	0.994	0.655	84 @ 1.880 230 @ 1.440	1.390	Ford	6.0/6.4L 32
360-1022	Single	1.227	0.850	115 @ 1.614 250 @ 1.064	0.991	GM	6.6L 32




# INCHES and MILLIMETERS CONVERSION CHART

FRACTION (Inches)	DECIMAL (Inches)	MM	FRACTION (Inches)	DECIMAL (Inches)	MM
1/64	.0156	.3969	33/64	.5156	13.0969
1/32	.0313	.7938	17/32	.5313	13.4938
3/64	.0469	1.1906	35/64	.5469	13.8906
1/16	.0625	1.5875	9/16	.5625	14.2875
5/64	.0781	1.9844	3/64	.5781	14.6844
3/32	.0938	2.3813	19/32	.5938	15.0813
7/64	.1094	2.7781	39/64	.6094	14.4781
1/8	.1250	3.1750	5/8	.6250	15.8750
9/64	.1406	3.5719	41/64	.6406	16.2719
5/32	.1563	3.9688	21/32	.6563	16.6688
11/64	.1719	4.3656	43/64	.6719	17.0656
3/16	.1875	4.7625	11/16	.6875	17.4625
13/64	.2031	5.1594	45/64	.7031	17.8594
7/32	.2188	5.5563	23/32	.7188	18.2563
15/64	.2344	5.9531	47/64	.7344	18.6531
1/4	.2500	6.3500	3/4	.7500	19.0500
17/64	.2656	6.7469	49/64	.7656	19.4469
9/32	.2813	7.1438	25/32	.7813	19.8438
19/64	.2969	7.5406	51/64	.7969	20.2406
5/16	.3125	7.9375	13/16	.8125	20.6375
21/64	.3281	8.3344	53/64	.8281	21.0344
11/32	.3438	8.7313	27/32	.8438	21.4313
23/64	.3594	9.1281	55/64	.8594	21.8281
3/8	.3750	9.5250	7/8	.8750	22.2250
25/64	.3906	9.9219	57/64	.8906	22.6219
13/32	.4063	10.3188	29/32	.9063	23.0188
27/64	.4219	10.7156	59/64	.9219	23.4156
7/16	.4375	11.1125	15/16	.9375	23.8125
29/64	.4531	11.5094	61/64	.9531	24.2094
15/32	.4688	11.9063	31/32	.9688	24.6063
31/64	.4844	12.3031	63/64	.9844	25.0031
1/2	.5000	12.7000	1	1.0000	25.4000



# METRIC TO DECIMAL

mm = inches	mm = inches	mm = inches	mm = inches	mm = inches	mm = inches	mm = inches	mm = inches
0.25 = 0.0098	16.00 = 0.6299	32.00 = 1.2598	48.00 = 1.8898	64.00 = 2.5197	80.00 = 3.1496	96.00 = 3.7795	112.00 = 4.4094
0.50 = 0.0197	16.25 = 0.6398	32.25 = 1.2697	48.25 = 1.8996	64.25 = 2.5295	80.25 = 3.1594	96.25 = 4.4193	112.25 = 4.4193
0.75 = 0.0295	16.50 = 0.6496	32.50 = 1.2795	48.50 = 1.9094	64.50 = 2.5394	80.50 = 3.1693	96.50 = 3.7992	112.50 = 4.4291
1.00 = 0.0394	16.75 = 0.6594	32.75 = 1.2894	48.75 = 1.9193	64.75 = 2.5492	80.75 = 3.1791	96.75 = 3.8091	112.75 = 4.4390
1.25 = 0.0492	17.00 = 0.6693	33.00 = 1.2992	49.00 = 1.9291	65.00 = 2.5591	81.00 = 3.1890	97.00 = 3.8189	113.00 = 4.4488
1.50 = 0.0591	17.25 = 0.6791	33.25 = 1.3091	49.25 = 1.9390	65.25 = 2.5689	81.25 = 3.1988	97.25 = 3.8287	113.25 = 4.4587
1.75 = 0.0689	17.50 = 0.6890	33.50 = 1.3189	49.50 = 1.9448	65.50 = 2.5787	81.50 = 3.2087	97.50 = 3.8386	113.50 = 4.4685
2.00 = 0.0787	17.75 = 0.6988	33.75 = 1.3287	49.75 = 1.9587	65.75 = 2.5886	81.75 = 3.2185	97.75 = 3.8484	113.75 = 4.4783
2.25 = 0.0886	18.00 = 0.7087	34.00 = 1.3386	50.00 = 1.9685	66.00 = 2.5984	82.00 = 3.2283	98.00 = 3.8583	114.00 = 4.4882
2.50 = 0.0984	18.25 = 0.7185	34.25 = 1.3484	50.25 = 1.9783	66.25 = 2.6083	82.25 = 3.2382	98.25 = 3.8681	114.25 = 4.4980
2.75 = 0.1083	18.50 = 0.7283	34.50 = 1.3583	50.50 = 1.9882	66.50 = 2.6181	82.50 = 3.2480	98.50 = 3.8780	114.50 = 4.5079
3.00 = 0.1181	18.75 = 0.7382	35.75 = 1.3681	50.75 = 1.9980	66.75 = 2.6280	82.75 = 3.2579	98.75 = 3.8878	114.75 = 4.5177
3.25 = 0.1280	19.00 = 0.7480	35.00 = 1.3780	51.00 = 2.0079	67.00 = 2.6378	83.00 = 3.2677	99.00 = 3.8976	115.00 = 4.5276
3.50 = 0.1378	19.25 = 0.7579	35.25 = 1.3878	51.25 = 2.0177	67.25 = 2.6476	83.25 = 3.2776	99.25 = 3.9075	115.25 = 4.5374
3.75 = 0.1477	19.50 = 0.7677	35.50 = 1.3976	51.50 = 2.0276	67.50 = 2.6575	83.50 = 3.2874	99.50 = 3.9173	115.50 = 4.5374
4.00 = 0.1575	19.75 = 0.7776	35.75 = 1.4075	51.75 = 1.4075	67.75 = 2.6573	83.75 = 3.2972	99.75 = 3.9272	115.75 = 4.5571
4.25 = 0.1673	20.00 = 0.7874	36.00 = 1.4173	52.00 = 2.0472	68.00 = 2.6772	84.00 = 3.3071	100.00 = 3.9370	116.00 = 4.5669
4.50 = 0.1772	20.25 = 0.7972	36.25 = 1.4272	52.25 = 2.0571	68.25 = 2.6870	84.25 = 3.3169	100.25 = 3.9469	116.25 = 4.5768
4.75 = 0.1870	20.50 = 0.8071	36.50 = 1.4370	52.50 = 2.0669	68.50 = 2.6969	84.50 = 3.3268	100.50 = 3.9567	116.50 = 4.5866
5.00 = 0.1969	20.75 = 0.8169	36.75 = 1.4469	52.75 = 2.0768	68.75 = 2.7067	84.75 = 3.3366	100.75 = 3.9665	116.75 = 4.5965
5.25 = 0.2067	21.00 = 0.8268	37.00 = 1.4567	53.00 = 2.0886	69.00 = 2.7165	85.00 = 3.3465	101.00 = 3.9764	117.00 = 4.6063
5.50 = 0.2165	21.25 = 0.8366	37.25 = 1.4665	53.25 = 2.0965	69.25 = 2.7264	85.25 = 3.3563	101.25 = 3.9862	117.25 = 4.6161
5.75 = 0.2264	21.50 = 0.8465	37.50 = 1.4764	53.50 = 2.1063	69.50 = 2.7362	85.50 = 3.3661	101.50 = 3.9961	117.50 = 4.6260
6.00 = 0.2362	21.75 = 0.8563	37.75 = 1.4862	53.75 = 2.1161	69.75 = 2.7461	85.75 = 3.3760	101.75 = 4.0059	117.75 = 4.6358
6.25 = 0.2461	22.00 = 0.8661	38.00 = 1.4961	54.00 = 2.1260	70.00 = 2.7559	86.00 = 3.3858	102.00 = 4.0157	118.00 = 4.6457
6.50 = 0.2559	22.25 = 0.8760	38.25 = 1.5059	54.25 = 2.1358	70.25 = 2.7657	86.25 = 3.3957	102.25 = 4.0256	118.25 = 4.6555
6.75 = 0.2657	22.50 = 0.8858	38.50 = 1.5157	54.50 = 2.1457	70.50 = 2.7756	86.50 = 3.4055	102.50 = 4.0354	118.50 = 4.6654
7.00 = 0.2756	22.75 = 0.8957	38.75 = 1.5256	54.75 = 2.1555	70.75 = 2.7854	86.75 = 3.4154	102.75 = 4.0453	118.75 = 4.6752
7.25 = 0.2854	23.00 = 0.9055	39.00 = 1.5354	55.00 = 2.1654	71.00 = 2.7953	87.00 = 3.4252	103.00 = 4.0561	119.00 = 4.6850
7.50 = 0.2953	23.25 = 0.9154	39.25 = 1.5453	55.25 = 2.1752	71.25 = 2.8051	87.25 = 3.4350	103.25 = 4.0659	119.25 = 4.6949
7.75 = 0.3051	23.50 = 0.9252	39.50 = 1.5551	55.50 = 2.1850	71.50 = 2.8150	87.50 = 3.4449	103.50 = 4.0748	119.50 = 4.7047
8.00 = 0.3150	23.75 = 0.9350	39.75 = 1.5650	55.75 = 2.1949	71.75 = 2.8248	87.75 = 3.4547	103.75 = 4.0846	119.75 = 4.7146
8.25 = 0.3248	24.00 = 0.9449	40.00 = 1.5748	56.00 = 2.2047	72.00 = 2.8346	88.00 = 3.4646	104.00 = 4.0945	120.00 = 4.7244
8.50 = 0.3346	24.25 = 0.9547	40.25 = 1.5846	56.25 = 2.2146	72.25 = 2.8445	88.25 = 3.4744	104.25 = 4.1043	120.25 = 4.7343
8.75 = 0.3445	24.50 = 0.9646	40.50 = 1.5945	56.50 = 2.2244	72.50 = 2.8543	88.50 = 3.4843	104.50 = 4.1142	120.50 = 4.7441
9.00 = 0.3543	24.75 = 0.9744	40.75 = 1.6043	56.75 = 2.2343	72.75 = 2.8642	88.75 = 3.4941	104.75 = 4.1240	120.75 = 4.7539
9.25 = 0.3642	25.00 = 0.9843	41.00 = 1.6142	57.00 = 2.2441	73.00 = 2.8740	89.00 = 3.5039	105.00 = 4.1339	121.00 = 4.7638
9.50 = 0.3740	25.25 = 0.9941	41.25 = 1.6240	57.25 = 2.2539	73.25 = 2.8839	89.25 = 3.5138	105.25 = 4.1437	121.25 = 4.7736
9.75 = 0.3839	25.50 = 1.0039	41.50 = 1.6339	57.50 = 2.2638	73.50 = 2.8937	89.50 = 3.5236	105.50 = 4.1535	121.50 = 4.7835
10.00 = 0.3937	25.75 = 1.0138	41.75 = 1.6437	57.75 = 2.2736	73.75 = 2.9035	89.75 = 3.5335	105.75 = 4.1634	121.75 = 4.7933
10.25 = 0.4035	26.00 = 1.0236	42.00 = 1.6535	58.00 = 2.2835	74.00 = 2.9134	90.00 = 3.5433	106.00 = 4.1732	122.00 = 4.8031
10.50 = 0.4134	26.25 = 1.0335	42.25 = 1.6634	58.25 = 2.2933	74.25 = 2.9232	90.25 = 3.5531	106.25 = 4.1831	122.25 = 4.8130
10.75 = 0.4232	26.50 = 1.0433	42.50 = 1.6732	58.50 = 2.3031	74.50 = 2.9331	90.50 = 3.5630	106.50 = 4.1929	122.50 = 4.8228
11.00 = 0.4331	26.75 = 1.0531	42.75 = 1.6831	58.75 = 2.3130	74.75 = 2.9429	90.75 = 3.5728	106.75 = 4.2028	122.75 = 4.8327
11.25 = 0.4429	27.00 = 1.0630	43.00 = 1.6929	59.00 = 2.3228	75.00 = 2.9528	91.00 = 3.5827	107.00 = 4.2126	123.00 = 4.8425
11.50 = 0.4528	27.25 = 1.0728	43.25 = 1.7028	59.25 = 2.3327	75.25 = 2.9626	91.25 = 3.5925	107.25 = 4.2224	123.25 = 4.8524
11.75 = 0.4625	27.50 = 1.0827	43.50 = 1.7126	59.50 = 2.3425	75.50 = 2.9724	91.50 = 3.6024	107.50 = 4.2323	123.50 = 4.8622
12.00 = 0.4724	27.75 = 1.0925	43.75 = 1.7224	59.75 = 2.3524	75.75 = 2.9823	91.75 = 3.6122	107.75 = 4.2421	123.75 = 4.8720
12.25 = 0.4823	28.00 = 1.1024	44.00 = 1.7323	60.00 = 2.3622	76.00 = 2.9921	92.00 = 3.6220	108.00 = 4.2520	124.00 = 4.8819
12.50 = 0.4921	28.25 = 1.1122	44.25 = 1.7421	60.25 = 2.3720	76.25 = 3.0020	92.25 = 3.6318	108.25 = 4.2618	124.25 = 4.8917
12.75 = 0.5020	28.50 = 1.1220	44.50 = 1.7520	60.50 = 2.3819	76.50 = 3.0118	92.50 = 3.6417	108.50 = 4.2717	124.50 = 4.9016
13.00 = 0.5118	28.75 = 1.1319	44.75 = 1.7618	60.75 = 2.3917	76.75 = 3.0217	92.75 = 3.6518	108.75 = 4.2717	124.75 = 4.9114
13.25 = 0.5217	29.00 = 1.1417	45.00 = 1.7717	61.00 = 2.4016	77.00 = 3.0315	93.00 = 3.6614	109.00 = 4.2913	125.00 = 4.9213
13.50 = 0.5315	29.25 = 1.1516	45.25 = 1.7815	61.25 = 2.4114	77.25 = 3.0413	93.25 = 3.6713	109.25 = 4.3012	125.25 = 4.9213
13.75 = 0.5413	29.50 = 1.1614	45.50 = 1.7913	61.50 = 2.4213	77.50 = 3.0512	93.50 = 3.6811	109.50 = 4.3110	125.50 = 4.9409
14.00 = 0.5512	29.75 = 1.1713	45.75 = 1.8012	61.75 = 2.4311	77.75 = 3.0610	93.75 = 3.6909	109.75 = 4.3209	125.75 = 4.9508
14.25 = 0.5610	30.00 = 1.1811	46.00 = 1.8110	62.00 = 2.4409	78.00 = 3.0709	94.00 = 3.7008	110.00 = 4.3307	126.00 = 4.9606
14.50 = 0.5709	30.25 = 1.1909	46.25 = 1.8209	62.25 = 2.4508	78.25 = 3.0807	94.25 = 3.7106	110.25 = 4.3406	126.25 = 4.9705
14.75 = 0.5807	30.50 = 1.2008	46.50 = 1.8307	62.50 = 2.4606	78.50 = 3.0906	94.50 = 3.7205	110.50 = 4.3504	126.50 = 4.9803
15.00 = 0.5906	30.75 = 1.2106	46.75 = 1.8406	62.75 = 2.4705	78.75 = 3.1004	94.75 = 3.7303	110.75 = 4.3602	126.75 = 4.9902
15.25 = 0.6004	31.00 = 1.2205	47.00 = 1.8504	63.00 = 2.4803	79.00 = 3.1102	95.00 = 3.7402	111.00 = 4.3701	127.00 = 5.0000
15.50 = 0.6102	31.25 = 1.2303	47.25 = 1.8602	63.25 = 2.4902	79.25 = 3.1201	95.25 = 3.7500	111.25 = 4.3799	
15.75 = 0.6201	31.50 = 1.2402	47.50 = 1.8701	63.50 = 2.5000	79.50 = 3.1299	95.50 = 3.7598	111.50 = 4.3898	
	31.75 = 1.2500	47.75 = 1.8799	63.75 = 2.5098	79.75 = 3.1398	95.75 = 3.7697	111.75 = 4.3996	



S.B. International Inc.  
2108 Utopia Avenue  
Nashville, TN 37211

1-800-THE-SEAT

615.248.6281 TEL  
615.248.6377 FAX  
Customerservice@sbintl.com  
www.sbintl.com

Catalog Number 118-60  
September 2021  
© 2021 S.B. International, Inc.  
Printed in the U.S.A.